



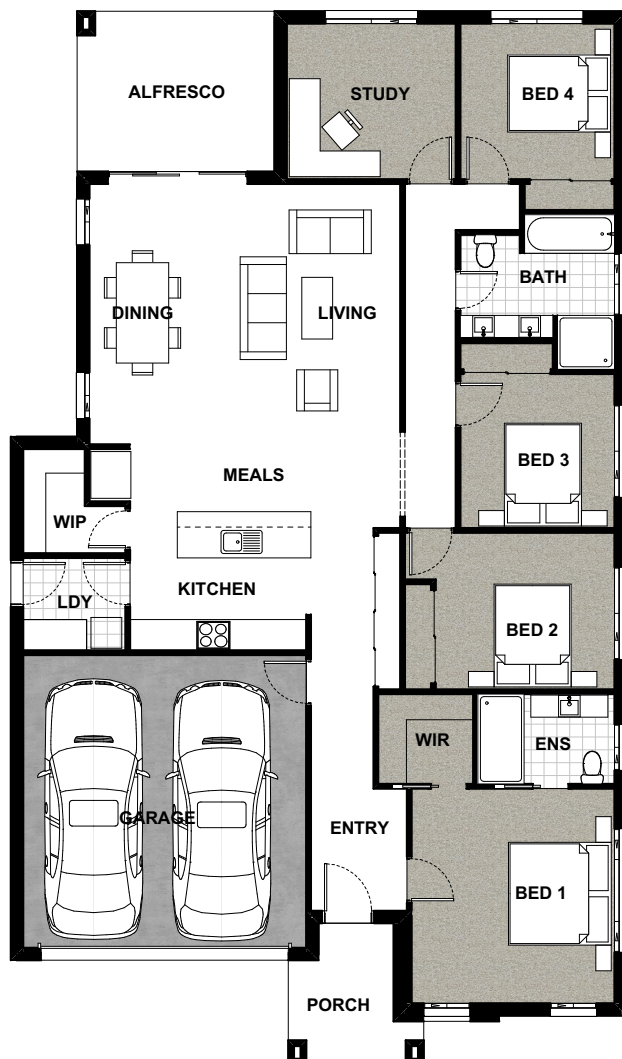
# THE VERMONT 24

LIVING:	3070x5070
DINING:	2980x5070
KITCHEN:	3520x4010
GARAGE:	5510x5700
ALFRESCO:	3480x3120
BED 1:	3950x4180
BED 2:	3480x3050
BED 3:	3000x3000
BED 4:	3000x3030
STUDY:	3290x3030

GROUND FLOOR:	168.5 <sup>M2</sup>
GARAGE:	34.3 <sup>M2</sup>
PORCH:	5.7 <sup>M2</sup>
ALFRESCO:	12.0 <sup>M2</sup>
TOTAL:	220.5 <sup>M2</sup>

HOUSE WIDTH:	11.9M
HOUSE LENGTH:	20.5M

SUITABLE BLOCK WIDTH:	14.0M
SUITABLE BLOCK LENGTH:	28.1M



Please contact the builder for detailed pricing. Copyright: This design is exclusive property of Bray Building PTY LTD. and must not be used, reproduced or copied wholly or in any way without the permission of the company.

Disclaimer: Please note that photographs, illustrations and drawings in this brochure are intended to be a visual aid only. Bray Building PTY LTD. gives no warranty and makes no representation as to the accuracy of an description, illustration, photograph or statement contained in this brochure. All information provided is subject to change without notice. Minimum Block width subjected to change based on Facade Design and Site Topography.